

Brannel School

Guidance on Uniform and Appearance Policy



September 2017



Brannel School

Uniform Policy Guidance

Our Uniform and Appearance Policy is intended to ensure that all students are treated the same, regardless of social or economic background. Wearing a school uniform signifies self-respect, diligence, pride in the school and a pledge to learn. A smart and distinctive school uniform also helps to reinforce the public perception that a school is high-performing and aspirational.

At Brannel, we are proud of the smart appearance of our students and are very appreciative of the support that parents have given in maintaining the standard of uniform, which has become a feature of the school. Details of the uniform are shown below and we would ask that parents continue to support our drive to improve standards.

Our school blazer was introduced at the start of the academic year 2017-18, when it became compulsory for Years 7-9. The school blazer is optional for Years 10-11 for the academic years 2017-18 and 2018-19 only.

To date, the school jumper has been compulsory. This became optional from the start of the academic year 2017-18.

Approved Supplier

Macron Store (Stud Sports), 8C St Columb Industrial Estate, Saint Columb Major.

Tel: **01637 881039**

Website: **<http://macronstoresw.com/schools/>**

OUTERWEAR



ACCEPTABLE

Official black school blazer with school logo – available from the Macron store or online. In inclement weather, students may wear additional weatherproof overcoats.

The school blazer is not an optional item.



NOT ACCEPTABLE

Hoodies, sweatshirts or jumpers of any kind (with the exception of the official school jumper) are not to be worn on the school premises.



NOT ACCEPTABLE

Hats and scarves are not to be worn on the school premises.

SCHOOL SHIRT



ACCEPTABLE

Plain white, button-up cotton shirt with long or short sleeves and regular collar. The shirt must be worn tucked in to trousers. White slips, t-shirts or vests can be worn under the shirt; they should not be visible below the hem of the shirt, at the neck or at the sleeve. Underwear should not be of a colour that shows through the shirt.



NOT ACCEPTABLE

Polo or sports-style shirts or shirts in any colour other than plain white.

SCHOOL TIE



ACCEPTABLE

Official Brannel School clip-on tie over white shirt with regular collar.



NOT ACCEPTABLE

Missing tie or tie worn without the top button of a regular shirt collar fastened.

SCHOOL JUMPER



ACCEPTABLE

Official black, V-neck jumper with red trim – available from Macron.

The school jumper is an optional item.



ACCEPTABLE

Plain black v-neck cardigan or jumper.

A plain black jumper or cardigan is an optional item.



NOT ACCEPTABLE

Hoodies, sweatshirts or jumpers of any kind (with the exception of the above) are not to be worn on the school premises.

SCHOOL TROUSERS OR SKIRTS



ACCEPTABLE

Black tailored trousers which colour-match the school blazer – available from Macron. No variation of the trouser or skirt styles is acceptable. Trousers must sit smartly at the waist and on the ankle / shoe line.

Plain black tights must be worn with skirts.



NOT ACCEPTABLE

Jeans, jeggings, leggings, tracksuit, drainpipe or skinny-fit trousers, cargo-style trousers, chinos or shorts. Trousers should not feature any fashion/designer buttons, zips or studs.



NOT ACCEPTABLE

Trousers worn low or loose to allow underwear to be seen. Fashion belts and buckles – other than slim, plain black belt with standard buckle. Any belt should be linked through belt hoops rather than worn over the top of trousers or skirts as a fashion accessory.



NOT ACCEPTABLE

Pencil or tube skirts, mini-skirts or the official school skirt worn high above the knee. Skirts must not be worn with ankle or knee socks; plain black tights must be worn with skirts.

SCHOOL SHOES



ACCEPTABLE

Smart black, flat, polishable (e.g. leather) shoes with black laces.



ACCEPTABLE

Smart black, flat, polishable (e.g. leather) slip-on shoes.



ACCEPTABLE

Smart black, polishable (e.g. leather) buckle or Velcro-fasten shoes.



ACCEPTABLE

Smart black, flat, polishable (e.g. leather) ballet-style flat shoes.



NOT ACCEPTABLE

Any heavy working /walking /Doc Martin-style boots. Any footwear with visible branded labels.



NOT ACCEPTABLE

Any plimsolls, baseball- or skate-type canvas shoes or trainers.



NOT ACCEPTABLE

Any shoes with heels above 2.5cm. Heels must not be stiletto.



NOT ACCEPTABLE

Any sandals, flip flops or open toe shoes or boots.

SCHOOL SOCKS



ACCEPTABLE

Plain black socks or tights. No long socks are to be worn above the knee. **Plain black tights must be worn with skirts.**



NOT ACCEPTABLE

Any white or sports-type socks.



NOT ACCEPTABLE

Patterned or coloured socks or tights.

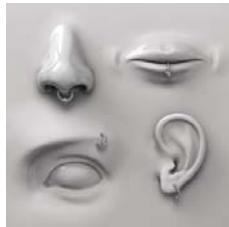
JEWELLERY AND HAIRSTYLES

Make up is NOT allowed. This includes nail varnish/gel nails and false nails of any sort.



ACCEPTABLE

One pair of small, plain gold or silver studs in the ear lobe – maximum of one per ear. No form of other facial piercing is allowed.



NOT ACCEPTABLE

Spiked studs, nose studs, ear stretchers, body piercings and any other related jewellery. It is not acceptable for pupils to conceal piercings with plasters. The wearing of a retainer in a piercing is not acceptable. It is advised that rings, bracelets and necklaces are not to be worn in School for Health and Safety reasons.



NOT ACCEPTABLE

Brightly coloured hair dyes, totally shaved or decorated scalps, eyebrow shavings etc. Hair accessories must be sensible and black.

PE Kit – Essential Items



OR



OR



OR



PE Kit – Optional Items

