

Brannel School

Guidance on Uniform, Appearance & Equipment Policy



Academic Year 2023-24



Brannel School

Uniform, Appearance and Equipment

Uniform and Appearance Policy

We provide a clear policy on our school uniform which we hope will be useful in helping both students and parents to understand our expectations.

Our Uniform and Appearance Policy is available to view on the school website. It is intended to ensure that all students are treated the same, regardless of social or economic background. Wearing a school uniform signifies respect and pride in the school, and a pledge to learn. A smart and distinctive school uniform also helps to reinforce the public perception that a school is high-performing and aspirational.

At Brannel, we are proud of the smart appearance of our students and are very appreciative of the support that parents continue to provide in maintaining the standard of our uniform.

Failing to comply with our Uniform, Appearance and Equipment Policy

We recognise that there are occasions where a student may not be able to wear the correct school uniform through no fault of their own. This may be as a result of shoes breaking or trousers tearing. Whatever the reason for these incidental failures, we intend to support students and their families so that the issues can be rectified quickly and without significant sanctions.

However, any student who repeatedly and intentionally fails to comply with uniform policy will be subject to the school's sanctions, as set out in our Uniform and Appearance Policy and in line with the school's Behaviour for Learning Policy (which can also be viewed on the school website).

OUTERWEAR



COMPULSORY

Official black school blazer with school logo. This is available from our approved uniform supplier. In inclement weather, students may wear additional weatherproof overcoats.



NOT ALLOWED

Non-school hoodies, sweatshirts or jumpers are not to be worn on the school premises. Our optional school jumper is available from our approved uniform supplier.



NOT ALLOWED

Hats and scarves are not to be worn on the school premises.

SCHOOL SHIRT



COMPULSORY

Plain white, button-up cotton shirt with long or short sleeves and regular collar.

The shirt must be worn tucked in to trousers or skirt waistband.

White slips, t-shirts or vests can be worn under the shirt but should not be visible below the hem of the shirt, at the neck or at the sleeve. Underwear should not be of a colour that shows through the shirt.



NOT ALLOWED

Polo or sports-style shirts or shirts in any colour other than plain white.



SCHOOL TIE

COMPULSORY

Official Brannel School clip-on tie over white shirt with regular collar.



SCHOOL JUMPER

OPTIONAL

Official black, V-neck jumper with red trim – available from Macron.



OPTIONAL

Plain black v-neck cardigan or jumper.



NOT ALLOWED

Hoodies, sweatshirts or jumpers which are not approved school uniform are not to be worn on the school premises.

SCHOOL TROUSERS, SKIRT AND SHORTS



COMPULSORY

EITHER black tailored trousers or black tailored shorts. Trousers must sit smartly at the waist and on the ankle at the shoe line.

OR the pleated plaid Brannel School skirt available from our approved uniform supplier.



NOT ALLOWED

Jeans, jeggings, leggings, tracksuit, drainpipe or skinny-fit trousers, cargo-style trousers, chinos or non-tailored shorts e.g. cut-off jeans.

Trousers should not feature any fashion/designer buttons, belt buckles, zips or studs.

SCHOOL SOCKS



COMPULSORY

Plain black socks or tights. No long socks are to be worn above the knee.



NOT ALLOWED

White or sports-type socks.



NOT ALLOWED

Patterned or coloured socks or tights.

SCHOOL SHOES



COMPULSORY

Smart black, flat, polishable (e.g. leather) shoes. These may be slip-on, buckle, Velcro, or black lace-ups.



NOT ALLOWED

Dr Marten boots or heavy working /walking boots.



NOT ALLOWED

Any plimsolls, baseball- or skate-type **canvas** shoes or trainers. Any footwear with visible branded labels.



NOT ALLOWED

Any shoes with heels above 2.5cm. Heels must not be stiletto.



NOT ALLOWED

Any sandals, flip flops or open toe shoes or boots.

JEWELLERY AND HAIRSTYLES



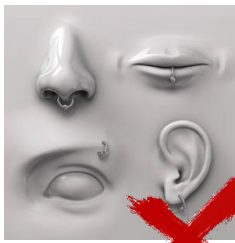
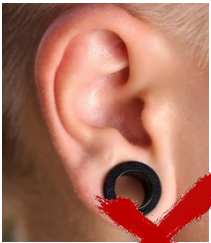
ACCEPTABLE

Small, plain gold or silver studs in the **ear lobe**, with a maximum of one stud per ear.



NOT ALLOWED

Hooped ear-rings, rings, bracelets and necklaces are not to be worn in school for Health and Safety reasons.



NOT ALLOWED

Spiked studs, nose studs, ear stretchers, body piercings and any other related jewellery.

It is not acceptable for pupils to conceal piercings with plasters. The wearing of a retainer in a piercing is not acceptable.



NOT ALLOWED

Highlights, dyes or ombre which are not a natural colour. Hair accessories must be sensible and black. Shaved heads, 'tram-lines' or decorated scalps. Eyebrow shavings.



NOT ALLOWED

Nail varnishes of any kind, false nails, nail extensions of any kind (e.g. gel, acrylic etc).



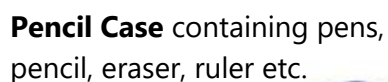
NOT ALLOWED

Heavy make-up, false eyelashes.

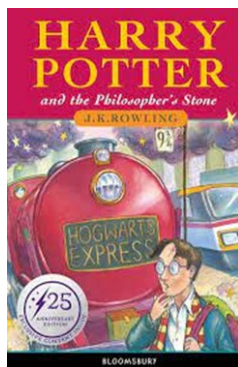


or mobile

Calcula
Maths o



Calculator – model specified by the Maths department is available to buy on ParentPay.



Reading Book – may be selected from school library.

SCHOOL TIMETABLE

| Time | Monday | Tuesday | Wednesday | Thursday | Friday |
|------|--------|---------|-----------|----------|--------|
| | | | | | |
| | | | | | |
| | | | | | |
| | | | | | |
| | | | | | |

PE Kit – Essential Items

Available from our approved uniform supplier



OR



OR



OR



PE Kit – Optional Items

Available from our approved uniform supplier

